

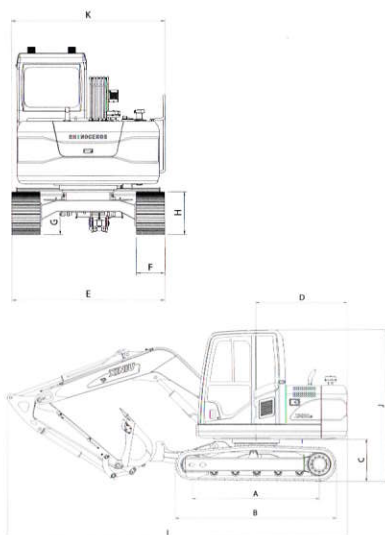
X80-E

CRAWLER EXCAVATOR

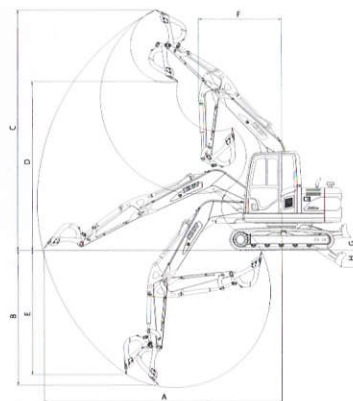
Main dimensions		Unit	
A	Wheelbase	mm	2200
B	Total length of track	mm	2750
C	Platform ground clearance	mm	720
D	Platform back turning radius	mm	1570
E	Chassis width	mm	2150
F	Track width	mm	400
G	Chassis ground clearance	mm	345
H	Track height	mm	650
I	Transport length	mm	5830
J	Height of cab	mm	2600
K	Transport width	mm	2160

Operating range		Unit	
A	Max. digging radius on ground	mm	6140
B	Max. digging depth	mm	3440
C	Max. digging height	mm	6220
D	Max. dumping height	mm	4540
E	Max. vertical digging depth	mm	3190
F	Min. rotation radius	mm	2180
G	Max. upgrade height of dozer blade	mm	335
H	Max. digging depth of doer blade	mm	440

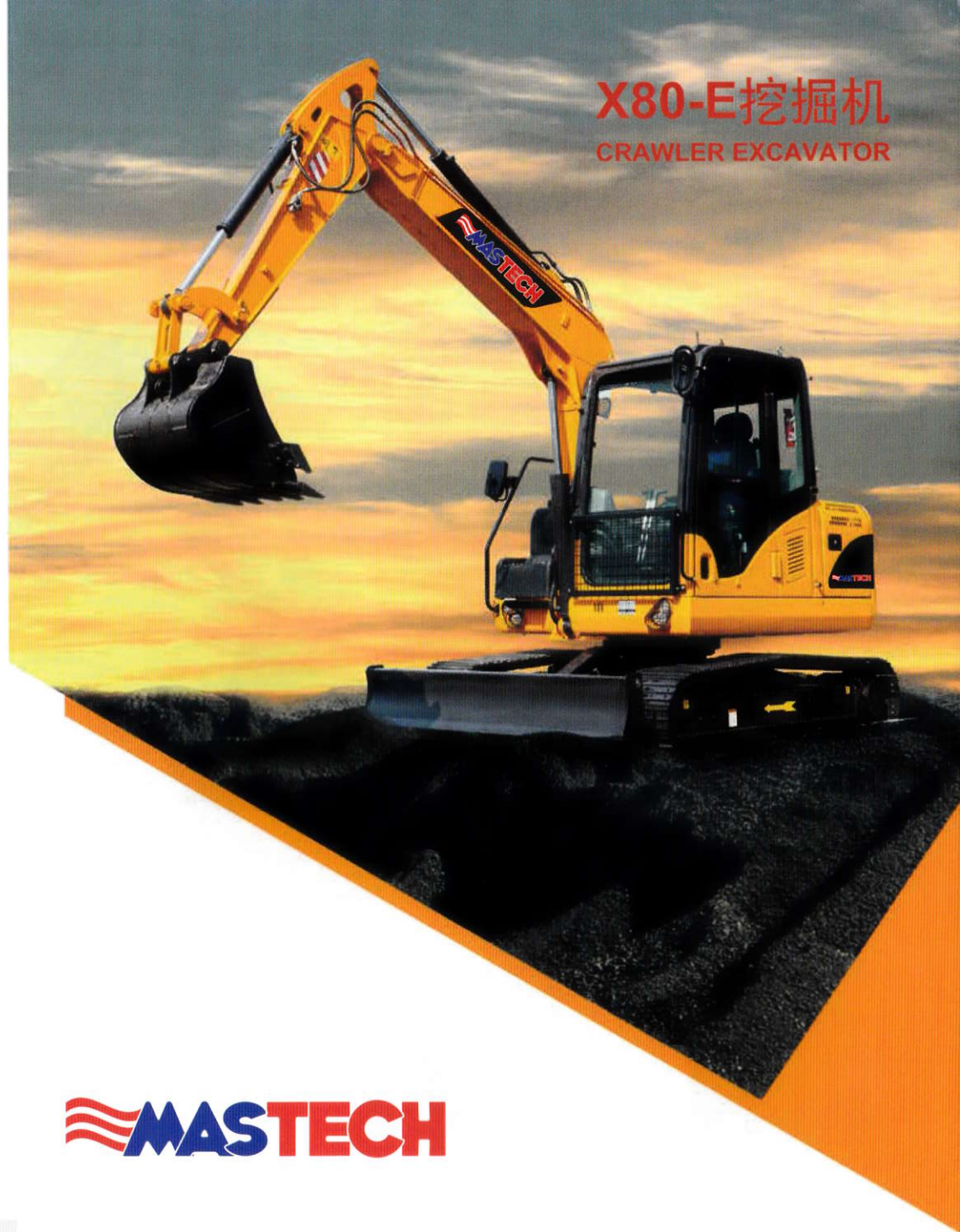
Specification		Unit	
Operation weight	kg	7450	
Bucket capacity	m ³	0.3	
Rated power	kW/rpm	33.7/2100	
Traveling speed(high/low)	km/h	3.7/2.3	
Rotating speed	rpm	9	
Climbing ability	/	35°	
Ground pressure	kPa	39	
Bucket digging force	kN	52	
Arm digging force	kN	38	



Main dimensions schematic diagram



Working range schematic diagram



X80-E挖掘机

CRAWLER EXCAVATOR

The logo for MASTECH, featuring three wavy lines to the left of the word 'MASTECH' in a bold, blue, sans-serif font.

X80-E

- Using YANMAR engine, in-line four stroke, low fuel consumption, environmental protection, convenient repair and maintenance.
- Electronic monitoring using a dot matrix type advanced multifunctional large screen liquid crystal display, electronic throttle control system has the function of throttle control, automatic idle speed, overheat protection, speed acquisition. Give full consideration to reduce the working oil consumption, to obtain maximum efficiency in all kinds of work site operation.
- Imported original hydraulic parts, quality is reliable and stable, working efficiency is high.
- Based on the strong and durable key parts and international quality chassis configuration, operation stability is stronger.
- The machine adopted new type cab with wide field of vision, new seat, automatic regulated air conditioning system, make the operation flexible and comfortable.
- The concept of low noise, ensure the operator to manipulate more comfortable and safety.



dust-proof net,
convenient cleaning

The sliding seat,
high-power A/C

Inspection and maintenance
objects within reach



YANMAR engine



Branded multi way valve



Branded rotary device assembly



New cabin with more security



Branded piston pump